

EventRecorderIQ™ FOR HIGHWAY-RAIL GRADE CROSSINGS

What SEAR knows, WSDMM now shows.

A modern monitoring application for the KB Signaling WSDMM that connects to the SEAR II, SEAR Ili, and Argus recorders you already own. Speaks the native serial protocol directly, translating the raw event stream into structured data in real time. Available as a live web dashboard at the crossing and as live telemetry to your back-office monitoring stack. No firmware changes. No new hardware.

KEEP YOUR SEAR

Works with SEAR II, SEAR Ili, and Argus. Available today.

Talks the native ASCII terminal protocol over RS-232. No firmware change to the recorder, no rip-and-replace.

LIVE CROSSING VIEW

A real-time browser dashboard at every wayside.

Animated crossing schematic, live I/O snapshot, activation counts and active alarms, accessible from any laptop on the local network the moment a signal maintainer pulls up.

LIVE TELEMETRY

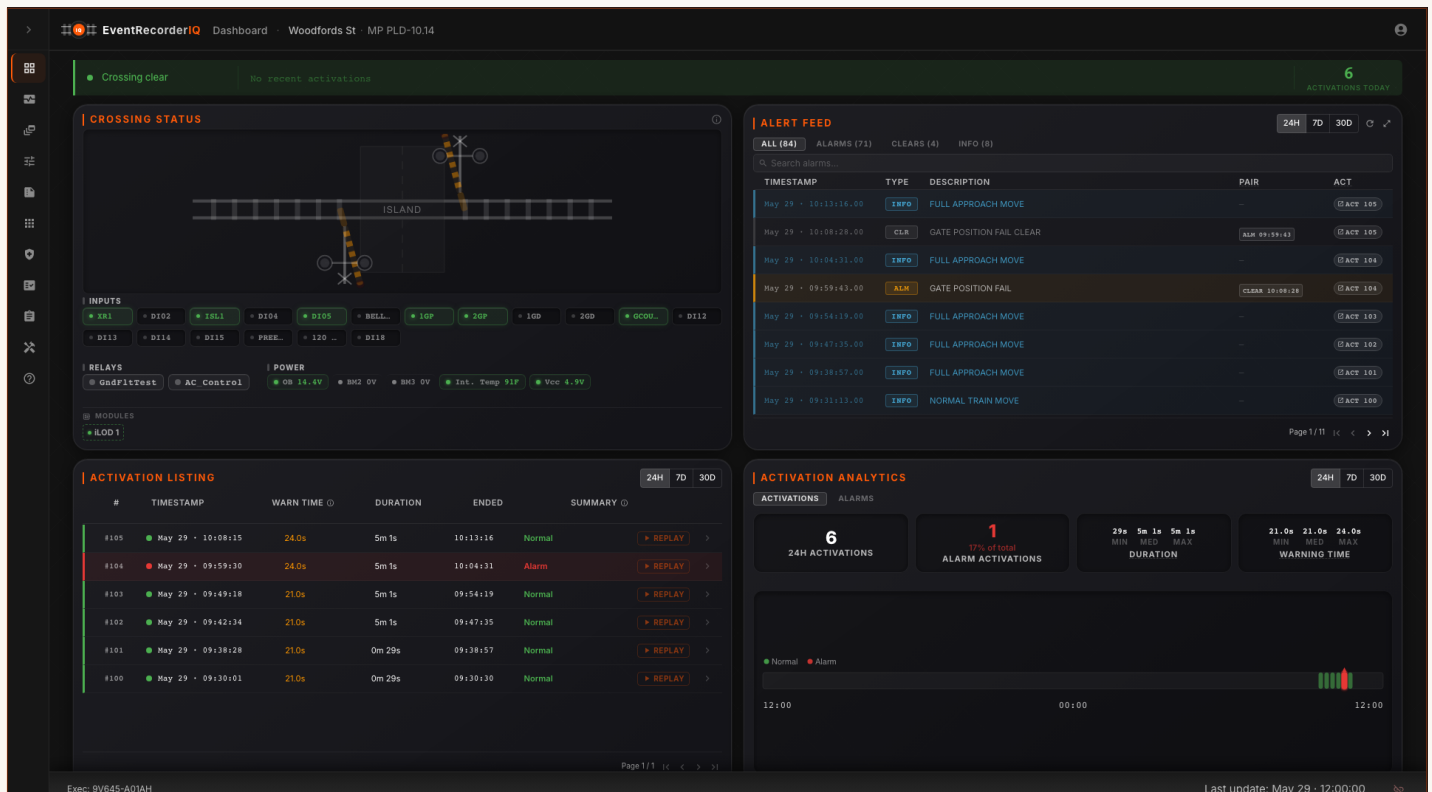
Every event, every alarm, forwarded in real time.

Live telemetry stream carries crossing events, alarms, and site identity to your central monitoring stack. Structured, timestamped, and streamed as it happens. No cloud required.

AUDIT-READY HISTORY

Every activation, kept and queryable.

Every activation logged with a full event timeline and warning-time compliance built in. Every alarm tracked to resolution. The report writes itself.



LIVE CROSSING DASHBOARD

REAL-TIME I/O · ACTIVATION HISTORY · ALARMS

WHY IT MATTERS

SEAR speaks a proprietary language. EventRecorderIQ translates it at the edge.

PLATFORM

KB Signaling WSDMM
SEAR II · SEAR Ili · Argus
No cloud required

HOW IT WORKS FOR RAILROAD SIGNAL DEPARTMENTS

From RS-232 terminal to **back-office telemetry**, without touching the SEAR.

EventRecorderIQ runs as a self-contained application on the WSDMM. It opens a serial session to the SEAR and parses the native event stream, alarm flags, and Configuration Report. The result is a modern web dashboard at the crossing and live telemetry streamed to the back office. Three SEAR family devices. One application. Zero changes to the recorder itself.

ACTIVATION REPLAY

Reconstruct every crossing activation, second by second.

Signal timeline with full I/O state reconstruction, warning-time annotation, and alarm pairing. Pull up any activation and see exactly what the crossing did, second by second. Any activation from the last 30 days is one click away. No serial cable, no download required.

24H · 7D · 30D HISTORY · FRA WARNING-TIME COMPLIANCE

SEAR-AWARE ALARMS

Industry-standard alarm semantics, normalized.

Captures Gen/ATCS alarm codes with proper informational vs. critical classification, automatic alarm/clear pairing, and a top-offender ranking with trend arrows.

GEN/ATCS ALARM CODES · CRITICAL TRENDS

ON-SITE DIAGNOSTICS

System log and module health. From any browser on the local network.

Pull the SEAR's internal system log on demand without a serial cable or terminal emulator. See which Echelon modules are communicating and which have lost comms. Firmware version and build details are always visible so you know exactly what's running at the site.

SYSTEM LOG · MODULE COMM · FIRMWARE VERSION

PRODUCTION HARDENED

Built for the field. Runs unattended, 24/7.

Recovers automatically from serial and network interruptions, then reconciles any missed events from the SEAR's onboard log. Automatic data retention prevents the onboard disk from filling up over the life of the deployment.

DEBIAN PACKAGE · ZERO-DOWNTIME UPDATES

<p>DEPLOYMENT</p> <p>One package. All three SEAR family devices supported.</p>	<p>PLATFORM</p> <p>Runs on the KB Signaling WSDMM at the crossing. One unit per site.</p>	<p>INSTALLATION</p> <p>Installs directly on the WSDMM already at the crossing. Site-specific setup takes minutes.</p>	<p>NETWORK</p> <p>Operates on the local crossing network. No internet connection, no cloud services required.</p>
--	--	--	--

Keep the recorder. **Modernize the visibility.**

www.outliereg.com

Outlier Engineering Group LLC
info@outliereg.com

