

WAYSIDE WATCHER FOR ASCTD

The back-office your ASCTD deserves.

A back-office platform built around Pivotal Rail Products' next-generation ASCTD. Every brake-test report tamper-evident and independently verifiable **PATENT PENDING**, conforming to AAR S-4027 and defending 49 CFR 232.305 cadence.

BRAKE-TEST PLAYBACK

Every test, replayable at 10 Hz.

Brake pipe, brake cylinder, auxiliary and emergency reservoirs. Phase markers for every sub-test.

CALIBRATION & M-1003

Calibration bound to every test. **PATENT PENDING**

Per-channel drift, due-date governance, certificate IDs, technician identity on the record.

INVESTIGATIONS

Failed test to verifiable evidence package.

Report, playback, health trend, calibration history auto-attached. Exportable for re-verification. **PATENT PENDING**

FRA LINE OF SIGHT

Self-service verification **PATENT PENDING for inspectors.**

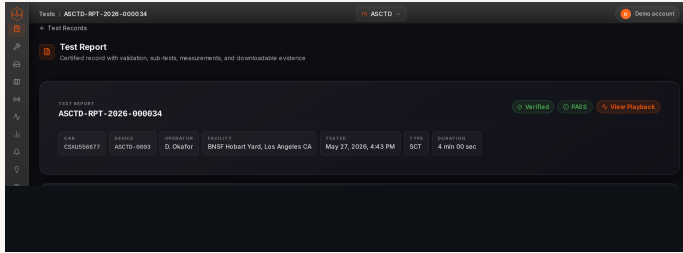
49 CFR 232.305 cadence defended in seconds. Verification links carry on every certified report.

The screenshot displays a 'Fleet Overview' dashboard for ASCTD devices. At the top, there are summary statistics: 10 Total Assets, 3 Healthy, 2 Warnings, 3 Faults, 1 Offline, and 1 Active Test (LIVE). Below these are three action-oriented cards: 'CALIBRATION OVERDUE' (1 overdue), 'FIRMWARE OUT OF DATE' (4 updates), and 'OPEN INVESTIGATIONS' (1 open, 1 in review). The main section is titled 'ASCTD FLEET' and shows 10 units. A filter bar allows switching between All (10), Fault (3), Warning (2), Healthy (3), and Offline (1). The units are displayed in a grid of cards, each representing an ASCTD unit with its status, battery level, uptime, and test results. For example, ASCTD-0005 is in a 'Fault' state with a battery level of 10.8V and a test result of 'SCT · EOC PASS'. ASCTD-0006 is also in a 'Fault' state with a battery level of 12.5V and a test result of 'SCT · 4P FAIL'. ASCTD-0007 is in a 'Fault' state with a battery level of 12.4V and a test result of 'SCT · EOC PASS'. ASCTD-0004 is in a 'Warning' state with a battery level of 12.3V and a test result of 'SCT · EOC PASS'. ASCTD-0009 is in a 'Warning' state with a battery level of 11.6V and a test result of 'SCT · EOC PASS'. ASCTD-0001, ASCTD-0002, and ASCTD-0003 are in a 'Healthy' state with battery levels of 12.6V, 12.4V, and 12.5V respectively, and test results of 'SCT · EOC PASS', 'SCT in progress', and 'SCT · EOC PASS'. ASCTD-0008 is in an 'Offline' state with a battery level of 11.6V and a test result of 'SCT · EOC PASS'. ASCTD-0010 is in an 'Unknown' state with a battery level of 12.6V and a test result of 'SCT · EOC PASS'. The dashboard also includes a footer with copyright information and links to Docs and Support.

HOW IT WORKS FOR ASCTD

Every brake test, defended.

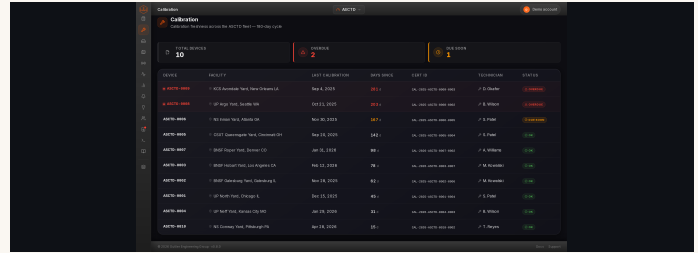
A certified brake-test report on Wayside Watcher carries the four pressure channels, the phase markers, the calibration state at time of test, the device's internal engineering telemetry, and a verification link an FRA inspector can open from the seat of a hi-rail. Four capabilities, one back office.



CERTIFIED BRAKE-TEST REPORT

The artifact your inspector wants to see.

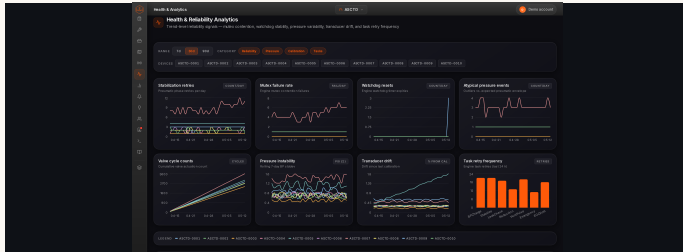
Verified, PASS, with car, device, operator, facility, timestamp, type, and duration on the face of the record. Playback, validation, and downloadable evidence one click away. **PATENT PENDING**



CALIBRATION & M-1003 E08

The calibration audit cycle becomes a query.

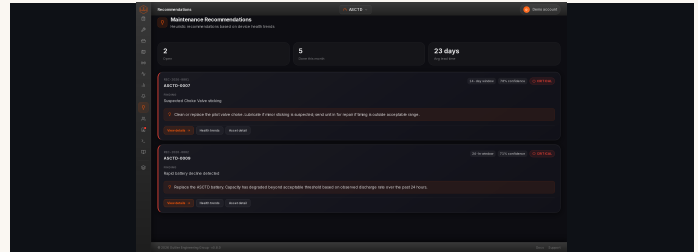
Fleet calibration dashboard, drift per channel, due-date status, certificate IDs, technician identity bound to every record. M-1003 audit prep stops being a paper hunt.



HEALTH & RELIABILITY

The rule, the threshold, the value that crossed.

Stabilization retries, mutex failure rate, watchdog resets, atypical pressure events, transducer drift. The underlying signal is exposed, not hidden.



MAINTENANCE RECOMMENDATIONS

Heuristic recommendations with linked evidence.

Confidence scored. Linked to the device-health trend that triggered them. Suggested, never required. Maintenance decides what work happens.

DEPLOYMENT

Your data, your boundary. Same platform either way.

ON-PREMISES

In your data center, on your hardware, behind your firewall. You own and control the data.

CUSTOMER CLOUD

Deployed in your AWS, Azure, or GCP tenant. Your network, your IAM, your data residency.

OUTLIER SAAS

Fully managed. Outlier hosts, patches, monitors. Fastest path to value for smaller operators.

See it on a Pivotal Rail Products ASCTD. Records that verify themselves.

www.waysidewatcher.com

Outlier Engineering Group LLC

info@outliereg.com

Founding device partner: Pivotal Rail Products